

**ACT ONE**  
**SCENE ONE**

*(A man stands in a doorway, emerging from darkness to Light.)*

**BLAKE:** I had terrible trouble getting here. I traversed a universe of chaos. Wandering perplexed and moping down mazes of harshness with faces who mark mask lives which are made up of worrying, fearing, and hoping, without always knowing what they do hope for. The ruined children of Jerusalem lost in humanity's fallen world. But.

I see the divine vision clearly. A paradise of fellowship, creativity, and love. Each of us shining, constantly making manifest the glories of God.

**TOGETHER ONE GREAT ETERNAL HUMANITY!**

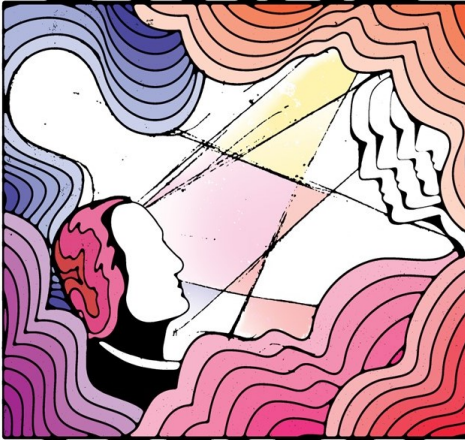
But. We fall into division. We die. We shall be redeemed and resurrected to eternal life. I see it all and so I have my mission: telling this tale in an epic poem. A task which I am striving to fulfil. Meanwhile barely eking a living. But. Keeping that vision alive for you.

*(We hear and then see CATHERINE BLAKE singing one of her husband's songs as a small engraver's shop comes to light, WILLIAM BLAKE framed in the doorway.)*

**CATHERINE:** "And so Tom awoke; and we rose in the dark,  
And got with our bags and our brushes to work,  
Tho' the morning was cold, Tom was happy and warm,  
So if all do their duty, they need not fear harm."

James Martin Charlton

**DIVINE**



**VISION**

William Blake in Felpham

Be different: buy direct  
from the author or  
[tslbooks.uk](http://tslbooks.uk)